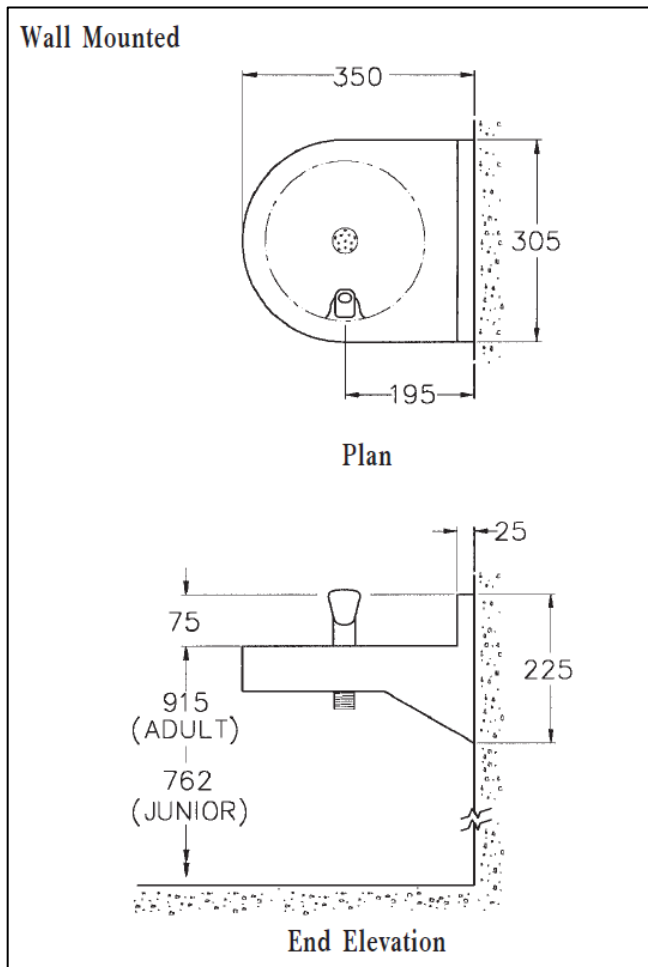


WALL MOUNTED BOTTLE FILLING FOUNTAIN

Technical Specification

PRODUCT CODE
CWS WMBF 463

MAY 2010



Waste Outlet

The bottle filling fountain is supplied with a 32 mm (1¹/₄ in) BSP flush grated waste fitting

Bottle Filling Valve

The fountain is supplied with a chrome plated swan neck bottle filler with self closing push button valve. The valve incorporates a flow adjuster and strainer and is supplied with a water inlet fitting to suit 15 mm diameter pipework. The height of the filler above the basin is 290mm and the base diameter is 30mm.

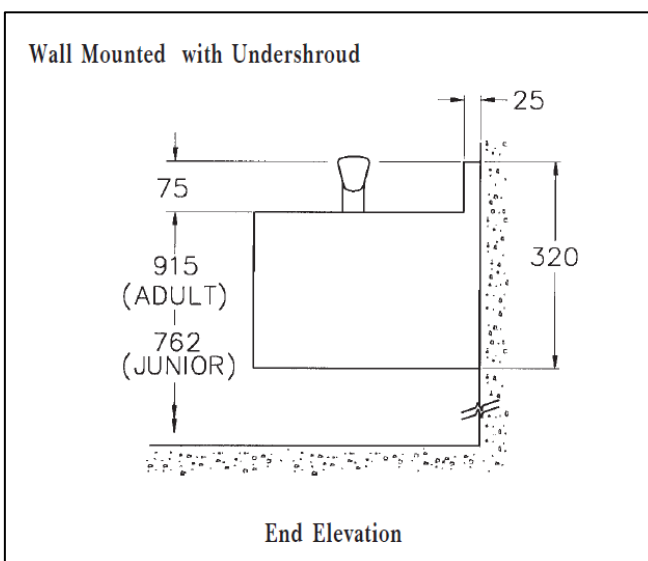
Product Code Selection for Order or Quotation

1. Base Product Code

- 463 -wall mounted bottle filling fountain
- 464 -wall mounted bottle filling fountain with integral half height undershroud.

2. Options

- WG -White Enviro-Glaze
(other colours please specify)



Please note: Diagrams show unit dimensions for Drinking Fountain versions of the Bottle Filler Fountain. The dimensions are identical except for the height of the bottle filler.

Unit 1, Elphicks Farm, Spelmonden Road, Horsmonden, Tonbridge. Kent TN12 8EL
Phone: 01580 211648 E-mail: info@cactuswatersystems.co.uk