



AQUAPOINTE PWSMEBFY ■ Contactless, Non-Refrigerated Bottle Filler

AquaPointe PWSMEBFY is a compact bottle filler. Ideal as a surface mount or countertop solution!

AquaPointe PWSMEBFY delivers ambient drinking water. This surface-mount bottle filler includes an electronic sensor for a contactless (touch free) activation and a 30 second shut off timer. The Bottle Counter conveniently displays the number of times the unit has been used, encouraging the refill of sports bottles.

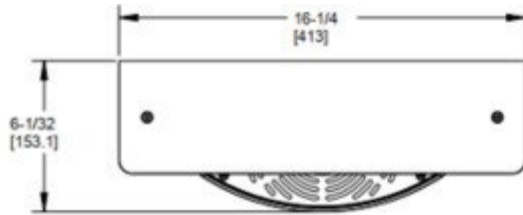
Key AquaPointe moulded components shall contain Freshield, which utilises a silver-based antimicrobial compound that reduces the growth of micro-organisms and mildew to protect the surfaces from discolouration, odours and degradation.

Complies with ANSI A117.1 and ADA. Shall comply with all relevant CE directives (LVD , EMC, RoHS). Shall comply with ANSI/NSF 61.

Suitable for public building, gymnasiums, sports complexes, hospitals, schools, and offices.

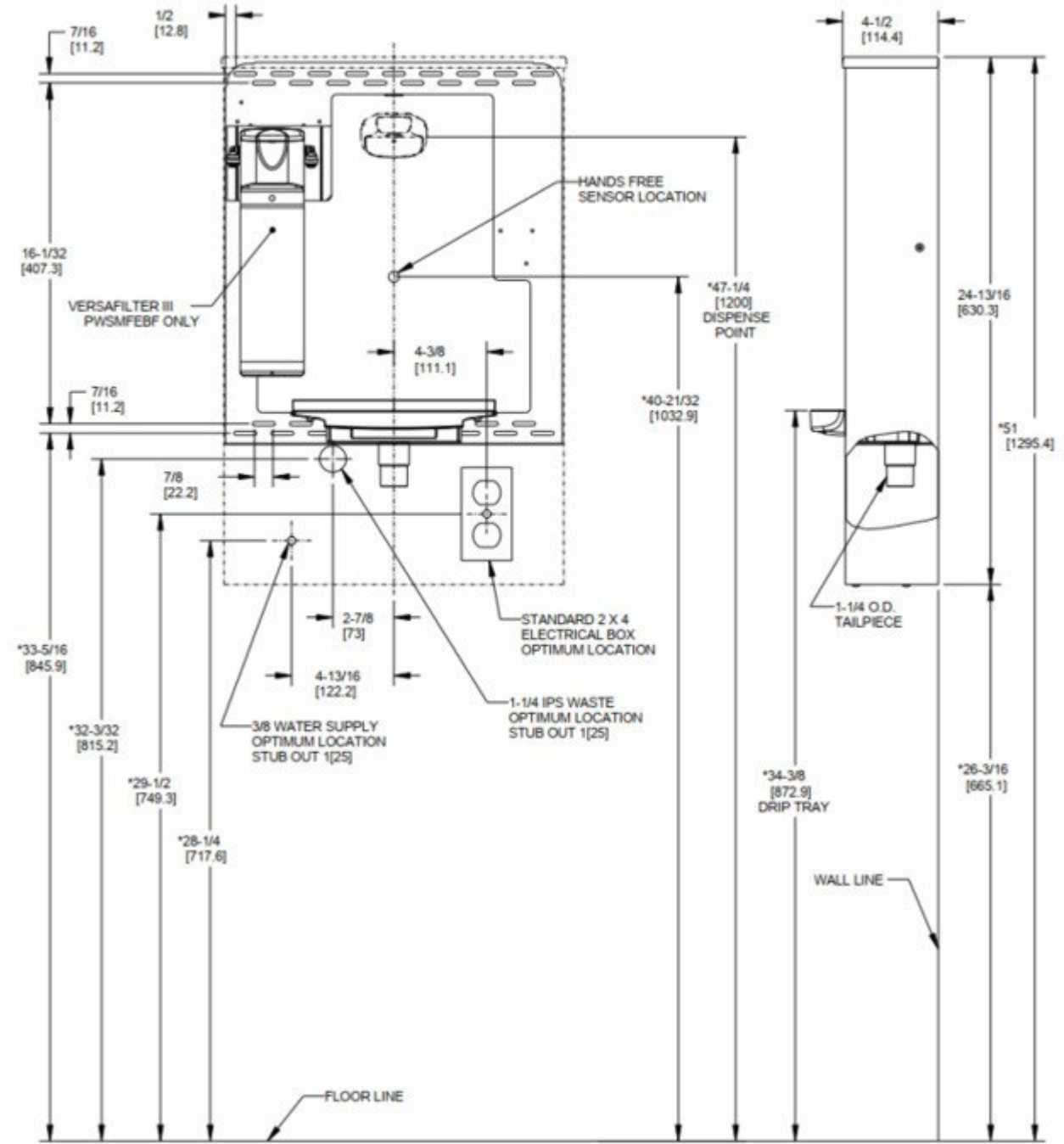


| MODEL CODE | PWSMEBFY 507110 |
|---------------------|---|
| ACTIVATION | Contactless (Infrared sensor) |
| SENSOR COVERAGE | Up to 5cm (approx.) |
| FILTRATION | Green Filter (optional), Built-in 100 micron strainer |
| AUTO-OFF WATER FLOW | Yes |
| DRAINAGE TYPE | Built in drain, Removable drip tray |
| EXTERIOR | Antimicrobial ABS Plastic, Brushed Stainless Steel |
| CHASSIS | Heavy Duty Galvanised Steel |
| DIMENSIONS | 630(H) x 413(W) x 144(D) mm |
| ALCOVE HEIGHT | 330 mm |
| NET WEIGHT | 5 kg |
| POWER SUPPLY | 220-240V, 50/60 Hz |
| COOLING PERFORMANCE | Non-Refrigerated |
| FULL LOAD AMPS | 0.1A |
| RATED WATTS | 7 W |
| COUNTRY OF ORIGIN | Mexico |
| CERTIFICATIONS | ANSI/NSF 61, CABO/ANSI A117.1, ADA, CE (LVD, EMC, RoHS) |
| WARRANTY | 1 Year |



NOTES:

- * 1. RECOMMENDED ADULT HEIGHT INSTALLATION SHOWN. ADJUST VERTICAL DIMENSIONS AS REQUIRED TO COMPLY WITH FEDERAL, STATE AND LOCAL CODES.
- 2. 3/8 O.D. WATER INLET WITH STRAINER PROVIDED.
- 3. STOP VALVE, TRAP, PIPE CONNECTOR TO WASTE LINE AND 3/8 COMPRESSION FITTING NOT PROVIDED.
- 4. ALL DIMENSIONS ARE IN INCHES. DIMENSIONS IN BRACKETS [] ARE IN MILLIMETERS.



www.oasis.ie
www.oasiscoolers.com
info@oasis.ie

OASIS IRELAND
Bunree Industrial Estate, Ballina,
Co. Mayo, F26 D5R3, Ireland.
+353 96 71222

OASIS POLAND
ul. Gutenberga 20,
44-164, Gliwice, Poland
+48 32 332 65 01



CONTACTLESS WATER
OASIS