



BOTTLE FILLING STATION ■ Contactless, Refrigerated

Bottle Filler

The Bottle Filling Station is perfect for those high traffic areas. With a contactless, touch-free activation - there are no fears of cross-contamination.

Designed for urban settings, the sloped top prevents trash being placed on the unit. Additionally, the powder-coat steel finish is highly-durable. This unit can be installed right against the wall to save-space. Easily serviced with a top and bottom door for quick access to filters, electronics and the chiller.

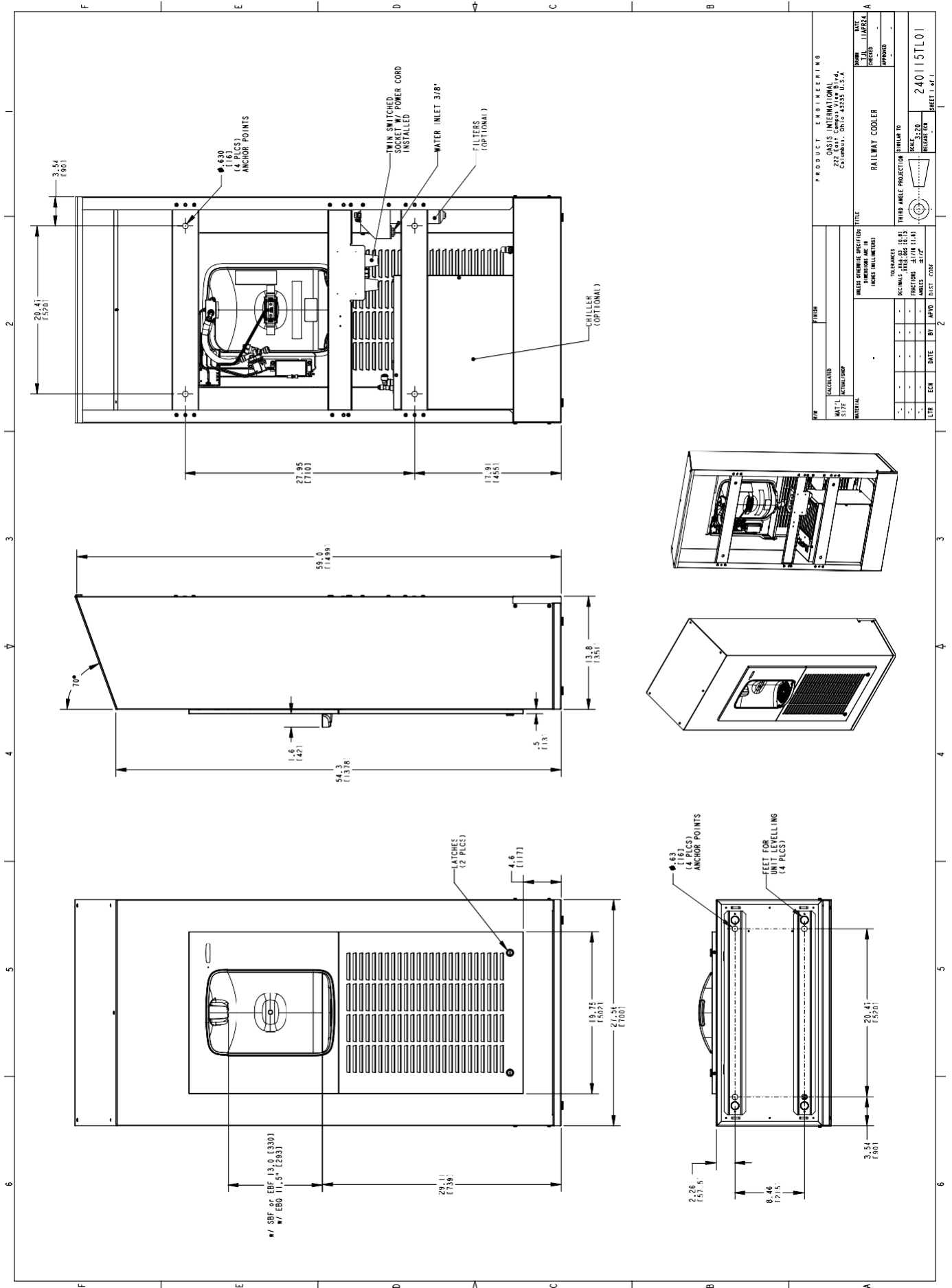
The Bottle Filling Station comes as standard in white. OASIS is offering custom colours or wrapping - for additional commercial value.

Chilled and Non-chilled models are available both with or without Quasar; our UVC LED that kills 99.99% of bacteria at the point of dispense.

The cooling system uses R-134a or R-290.



| MODEL CODE | MWEBF RW | MW2EBFY RW | MW8EBFY RW |
|---------------------|----------|--|---|
| ACTIVATION | | Contactless (Infrared sensor) | |
| SENSOR COVERAGE | | Up to 5cm (approx.) | |
| FILTRATION | | Optional Green Filter / VersaFilter III | |
| DISINFECTION | | Optional Quasar UVC LED | |
| Auto-Off Water Flow | | Yes | |
| FLOW RATE | | 4.2LPM | |
| DRAINAGE TYPE | | Built in drain, Removable drip tray | |
| COLOUR | | Standard White; Optional custom colours or wrapping. | |
| EXTERIOR | | Brushed Stainless Steel | |
| CHASSIS | | Heavy Duty Galvanised Steel | |
| DIMENSIONS | | 1505mm (H) x 700mm (W) x 350mm (D)[mm] | |
| ALCOVE HEIGHT | | 330 mm | |
| NET WEIGHT | 49 kg | 64 kg | 73 kg |
| POWER SUPPLY | | 220-240V, 50/60 Hz | |
| COOLING PERFORMANCE | N/A | 10 LPH Rated Capacity & Base Rate (10°C in 21°C amb. temp.) | 60 LPH Rated Capacity & Base Rate (10°C in 21°C amb. temp.) |
| FULL LOAD AMPS | 0.1 A | 0.8 A | 2.2 A |
| RATED WATTS | 7 W | 102 W | 347 W |
| ENERGY SYSTEM | | Refrigeration is on only when in use or if water temp increases during long period of standby. | |
| COUNTRY OF ORIGIN | | Poland | |
| CERTIFICATIONS | | CE (LVD, EMC, RoHS) | |
| WARRANTY | | 1 Year | |



| | | | |
|---------------------|----------|-------------------------------|----------|
| PROJECT ENGINEERING | | OASIS INTERNATIONAL | |
| OASIS INTERNATIONAL | | 237 (INDIA) GATE 43335 U.S.A. | |
| NAME | DATE | NAME | DATE |
| JULI LLIBRE | | JULI LLIBRE | |
| CHECKED | APPROVED | CHECKED | APPROVED |
| RAILWAY COOLER | | RAILWAY COOLER | |
| TITLE | | TITLE | |
| SCALE | | SCALE | |
| 3:20 | | 3:20 | |
| REVISION | | REVISION | |
| 240115TL01 | | 240115TL01 | |
| SHEET 1 OF 1 | | SHEET 1 OF 1 | |



www.oasis.ie
 www.oasiscoolers.com
 info@oasis.ie

OASIS IRELAND
 Bunree Industrial Estate, Ballina,
 Co. Mayo, F26 D5R3, Ireland.
 +353 96 71222

OASIS POLAND
 ul.Gutenberga 20,
 44-164, Gliwice, Poland
 +48 32 332 65 01



BOTTLE FILLING STATION ■ Manual, Refrigerated Bottle Filler

The Bottle Filling Station is perfect for those high traffic areas. With a contactless, touch-free activation - there are no fears of cross-contamination.

Designed for urban settings, the sloped top prevents trash being placed on the unit. Additionally, the powder-coat steel finish is highly-durable. This unit can be installed right against the wall to save-space. Easily serviced with a top and bottom door for quick access to filters, electronics and the chiller.

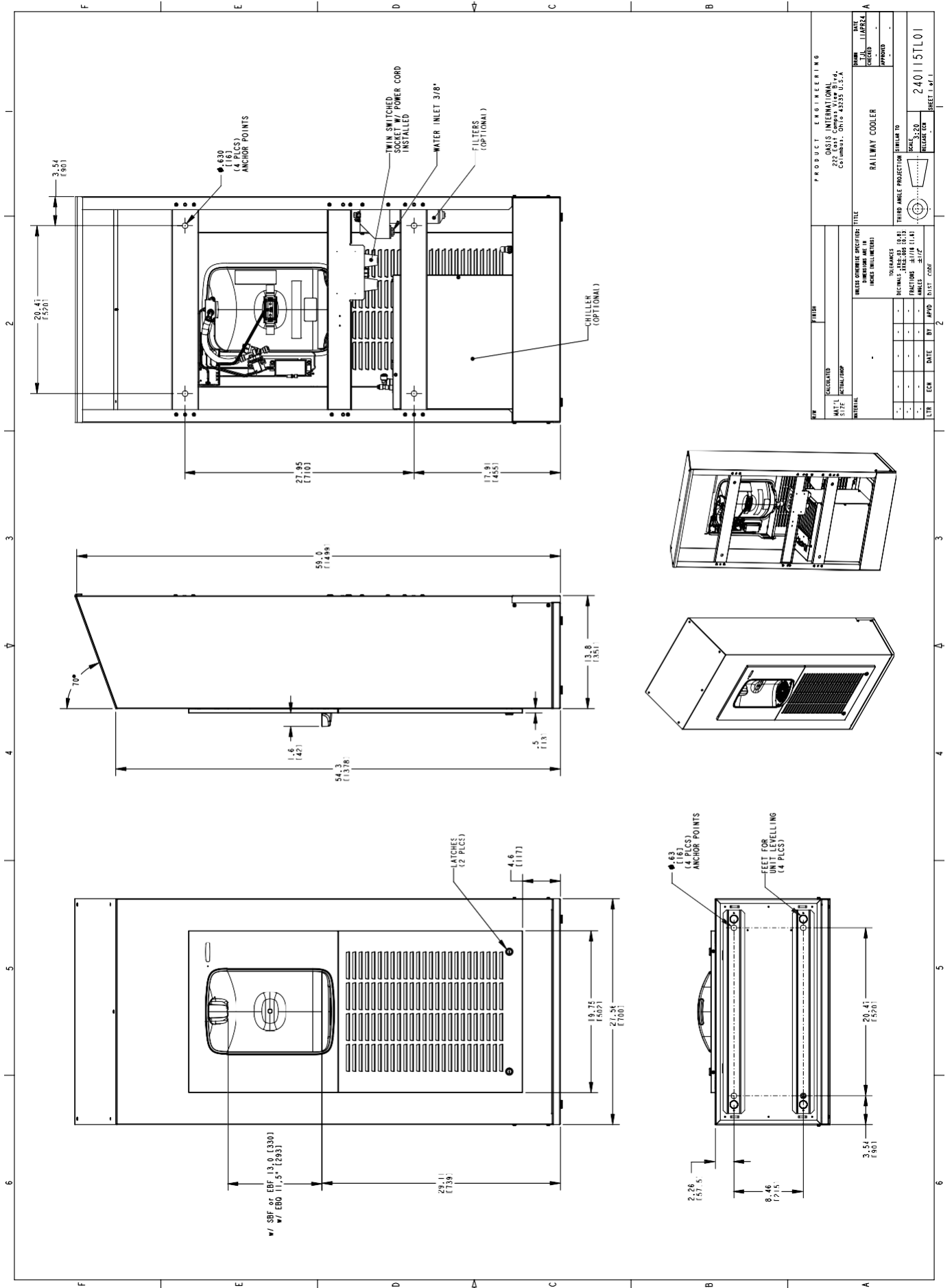
The Bottle Filling Station comes as standard in white. OASIS is offering custom colours or wrapping - for additional commercial value.

Chilled and Non-chilled models are available both with or without Quasar; our UVC LED that kills 99.99% of bacteria at the point of dispense.

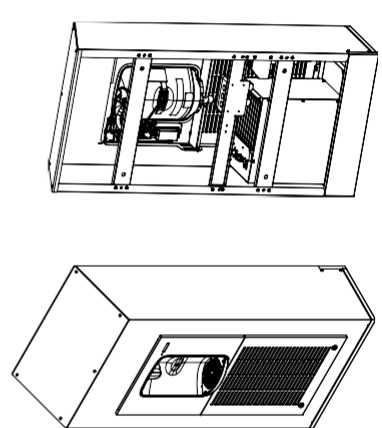
The cooling system uses R-134a or R-290.



| MODEL CODE | MWSBF RW | MW2SBFY RW | MW8SBFY RW |
|---------------------|----------|--|--|
| ACTIVATION | | Mechanical Push Button | |
| FILTRATION | | Optional Green Filter / VersaFilter III | |
| DISINFECTION | | Optional Quasar UVC LED | |
| Auto-Off Water Flow | | No | |
| FLOW RATE | | 4.2LPM | |
| DRAINAGE TYPE | | Built in drain, Removable drip tray | |
| COLOUR | | Standard White; Optional custom colours or wrapping. | |
| EXTERIOR | | Brushed Stainless Steel | |
| CHASSIS | | Heavy Duty Galvanised Steel | |
| DIMENSIONS | | 1505mm (H) x 700mm (W) x 350mm (D)[mm] | |
| ALCOVE HEIGHT | | 330 mm | |
| NET WEIGHT | 49 kg | 64 kg | 73 kg |
| POWER SUPPLY | | N/A | |
| COOLING PERFORMANCE | N/A | 10 LPH Rated Capacity & Base Rate (10°C in 21°C amb. temp.) | 60 LPH Rated Capacity & Base Rate (10°C in 21°C amb. temp.) |
| FULL LOAD AMPS | N/A | 0.7 A | 2.1 A |
| RATED WATTS | N/A | 95 W | 340 W |
| ENERGY SYSTEM | | Refrigeration is on only when in use or if water temp increases during long period of standby. | |
| COUNTRY OF ORIGIN | | Poland | |
| CERTIFICATIONS | | CE (LVD, EMC, RoHS) | |
| WARRANTY | | 1 Year | |



| | | | |
|---------------------|------|--|------|
| PROJECT ENGINEERING | | OASIS INTERNATIONAL 257 (INDIA) CHENNAI 600 033 INDIA | |
| DESIGNED BY | DATE | APPROVED BY | DATE |
| U.L. LLARZA | - | U.L. LLARZA | - |
| RAILWAY COOLER | | TITLE | |
| RAILWAY COOLER | | RAILWAY COOLER | |
| SCALE | | SCALE | |
| 1:1 | | 1:1 | |
| PROJECT NO. | | PROJECT NO. | |
| 240115TL01 | | 240115TL01 | |
| SHEET NO. | | SHEET NO. | |
| 1 | | 1 | |





QUASAR BOTTLE FILLING STATION ■ Contactless, Refrigerated Bottle Filler

The Bottle Filling Station is perfect for those high traffic areas. With a contactless, touch-free activation - there are no fears of cross-contamination.

Designed for urban settings, the sloped top prevents trash being placed on the unit. Additionally, the powder-coat steel finish is highly-durable. This unit can be installed right against the wall to save-space. Easily serviced with a top and bottom door for quick access to filters, electronics and the chiller.

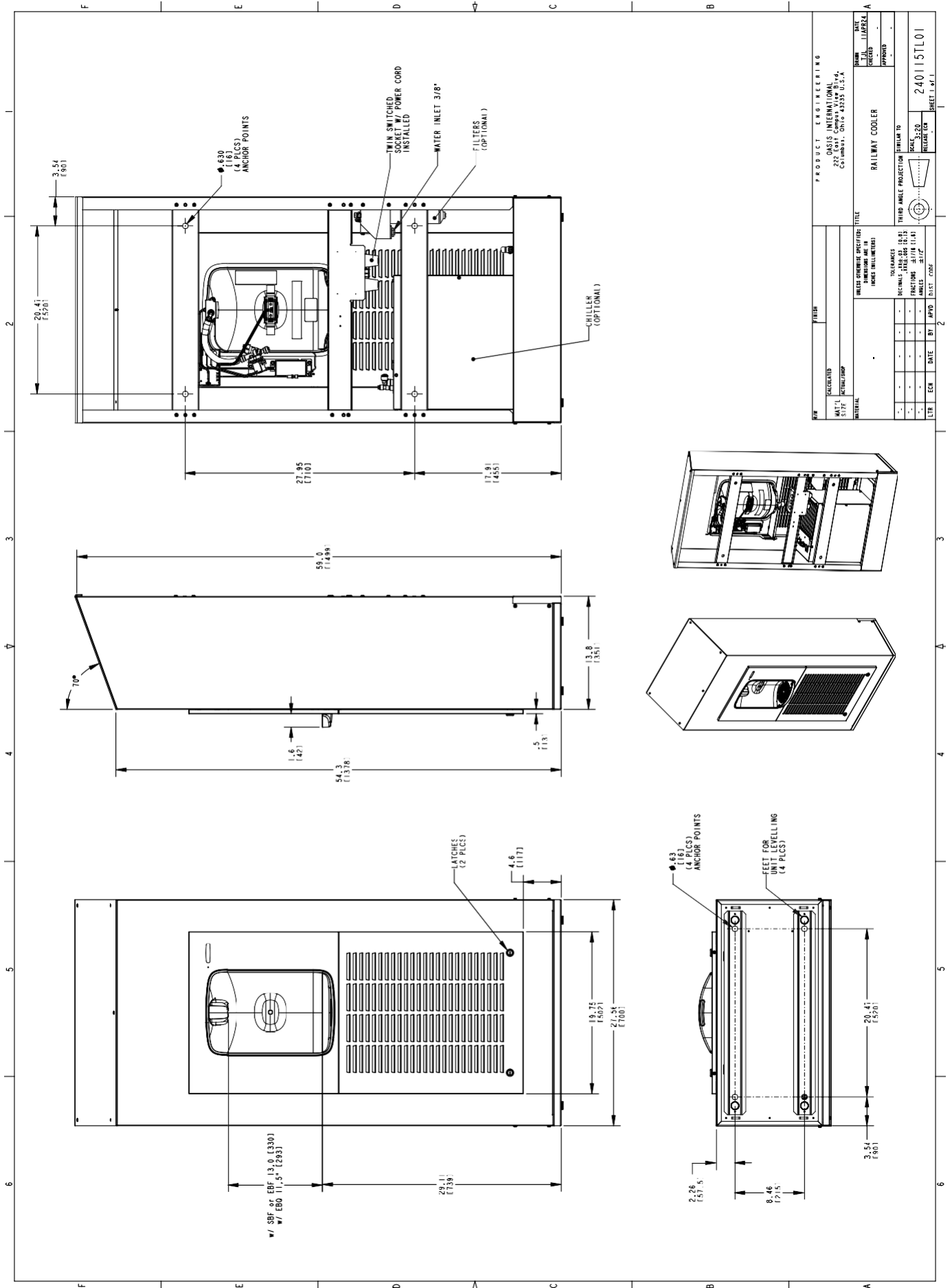
The Bottle Filling Station comes as standard in white. OASIS is offering custom colours or wrapping - for additional commercial value.

Chilled and Non-chilled models are available both with or without Quasar; our UVC LED that kills 99.99% of bacteria at the point of dispense.

The cooling system uses R-134a or R-290.



| MODEL CODE | MWEBQ RW | MW2EBQY RW | MW8EBQY RW |
|---------------------|----------|--|---|
| ACTIVATION | | Contactless (Infrared sensor) | |
| SENSOR COVERAGE | | Up to 5cm (approx.) | |
| FILTRATION | | Optional Green Filter / VersaFilter III | |
| DISINFECTION | | Quasar UVC LED | |
| Auto-Off Water Flow | | Yes | |
| FLOW RATE | | 4.2LPM | |
| DRAINAGE TYPE | | Built in drain, Removable drip tray | |
| COLOUR | | Standard White; Optional custom colours or wrapping. | |
| EXTERIOR | | Brushed Stainless Steel | |
| CHASSIS | | Heavy Duty Galvanised Steel | |
| DIMENSIONS | | 1505mm (H) x 700mm (W) x 350mm (D)[mm] | |
| ALCOVE HEIGHT | | 300 mm | |
| NET WEIGHT | 49 kg | 64 kg | 73 kg |
| POWER SUPPLY | | 220-240V, 50/60 Hz | |
| COOLING PERFORMANCE | N/A | 10 LPH Rated Capacity & Base Rate (10°C in 21°C amb. temp.) | 60 LPH Rated Capacity & Base Rate (10°C in 21°C amb. temp.) |
| FULL LOAD AMPS | 0.1 A | 0.8 A | 2.2 A |
| RATED WATTS | 7 W | 102 W | 347 W |
| ENERGY SYSTEM | | Refrigeration is on only when in use or if water temp increases during long period of standby. | |
| COUNTRY OF ORIGIN | | Poland | |
| CERTIFICATIONS | | CE (LVD, EMC, RoHS) | |
| WARRANTY | | 1 Year | |



| | | | |
|---------------------|----------|--|---------------------|
| PROJECT ENGINEERING | | OASIS INTERNATIONAL 257 (INDIA), 011 0 43335 0 2, A | |
| NAME | DATE | NAME | DATE |
| CREATED | | REVISION | |
| RAILWAY COOLER | | RAILWAY COOLER | |
| ISSUES | | ISSUES | |
| NO. | DATE | NO. | DATE |
| 1 | 30/07/20 | 1 | 30/07/20 |
| LTR | | LTR | |
| ECN | DATE | BY | APPROV. DIST. CONF. |
| | | | |



www.oasis.ie
www.oasiscoolers.com
info@oasis.ie

OASIS IRELAND
Bunree Industrial Estate, Ballina,
Co. Mayo, F26 D5R3, Ireland.
+353 96 71222

OASIS POLAND
ul. Gutenberga 20,
44-164, Gliwice, Poland
+48 32 332 65 01